

Bonfiglioli

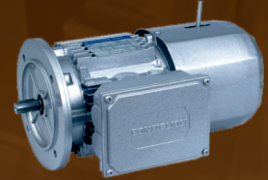
Price List w.e.f. April. 2022



AS
Inline Helical Speed Reducer & Gearmotor



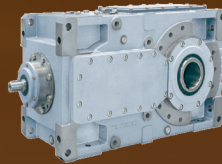
VF & W
Worm Gearmotors



BN & BE
AC Electric Motors



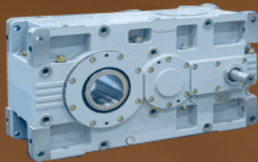
A
Helical Bevel Gearmotor



HDO
Heavy Duty Bevel Helical Gearbox



TA
Shaft Mounted Speed Reducers (SMSR)



HDP
Parallel Shaft Gear Units



LC
Servo Gearbox



300
Planetary Gear Units



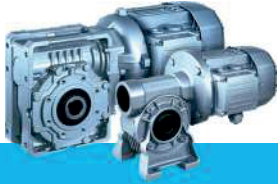
RAN
Bevel Gears



F
Shaft Mounted Gearbox & Gearmotors



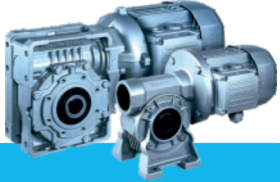
C
Inline Helical Gearbox & Gearmotors



VF & W Worm Gearmotors

"VF & W" WORM REDUCTION GEAR BOX				
SIZE	VERSION	HS PRICE	FRAME SIZE	IEC PRICE
VF 27	N-A-F-V	7150	P27	8590
VF 30	U-N-A-F-P-V	7210	P56-P63	8700
VF 44	U-N-A-F-FA-P-V	8150	P63-P71	10040
VF 49	U-N-A-F-FA-V	10750	P63-P71-P80	13020
VF 49	P	10370	P63-P71-P80	12640
W 63	U	19020	P71-P80-P90	19820
W 63	UF /UFC	20270	P71-P80-P90	21070
W 75	U	23770	P71-P80-P90-P100-P112	24540
W 75	UF /UFC	25680	P71-P80-P90-P100-P112	26450
W 86	U	29600	P71-P80-P90-P100-P112	31600
W 86	UF /UFC	31510	P71-P80-P90-P100-P112	33510
W 110	U	47550	P80-P90-P100-P112	50220
W 110	UF /UFC	51460	P80-P90-P100-P112	54130
W 110	U	NA	P132	52890
W 110	UF /UFC	NA	P132	56810
VF 130	N-A-F-FC-P-V	78440	P90-P100-P112-P132	87130
VF 150	N-A-F-FC-P-V	101290	P100-P112-P132-P160	110390
VF 185	N-A-F-FC-P-V	166580	P100-P112-P132-P160-P180	175840
VF 210	N-A-P-V	344650	P132-P160-P180-P200-P225	409530
VF 250	N-A-P-V	460910	P132-P160-P180-P200-P225	525790

"VFR & WR" HELIWORM REDUCTION GEAR BOX				
SIZE	VERSION	HS PRICE	FRAME SIZE	IEC PRICE
VFR 44	U-N-A-F-FA-P-V	12890	S44	14780
VFR 49	U-N-A-F-FA-P-V	17970	P63	20240
WR 63	U	28930	P63-P71	29730
WR 63	UF/UFC	30200	P63-P71	30980
WR 75	U	36760	P63-P71-P80-P90	37520
WR 75	UF/UFC	38670	P63-P71-P80-P90	39430
WR 86	U	42590	P63-P71-P80-P90	44590
WR 86	UF/UFC	44490	P63-P71-P80-P90	46500
WR 110	U	72560	P71-P80-P90-P100-P112	75230
WR 110	UF/UFC	76470	P71-P80-P90-P100-P112	79150
VFR 130	N-A-F-FC-P-V	111730	P80-P90-P100-P112	120430
VFR 150	N-A-F-FC-P-V	143200	P90-P100-P112-P132	152300
VFR 185	N-A-F-FC-P-V	219330	P90-P100-P112-P132	228590
VFR 210	N-A-P-V	411030	P100-P112-P132-P160	475920
VFR 250	N-A-P-V	544480	P100-P112-P132-P160	609370



VF & W Worm Gearmotors

"VF/VF, VF/W & VF" DOUBLE WORM GEAR BOXES				
SIZE	VERSION	HS PRICE	FRAME SIZE	IEC PRICE
VF/VF 30/44	U-A-F-P	21820	P56-P63	23400
VF/VF 30/49	U-N-A-F-FA-P-V	25700	P56-P63	27280
VF/W 30/63	U	35320	P56-P63	37180
VF/W 30/63	UF/UFC	36820	P56-P63	38680
VF/W 44/75	U	42250	P63-P71	44610
VF/W 44/75	UF/UFC	44300	P63-P71	46660
VF/W 44/86	U	48490	P63-P71	50830
VF/W 44/86	UF/UFC	50530	P63-P71	52860
VF/W 49/110	U	65010	P63-P71-P80	67810
VF/W 49/110	UF/UFC	74470	P63-P71-P80	77260
W/VF 63/130	N-A-F-FC-P-V	105280	P71-P80-P90	106170
W/VF 86/150	N-A-F-FC-P-V	139710	P71-P80-P90-P100-P112	147770
W/VF 86/185	N-A-F-FC-P-V	204840	P71-P80-P90-P100-P112	206900
VF/VF 130/210	N-A-P-V	433350	P90-P100-P112-P132	440020
VF/VF 130/250	N-A-P-V	562110	P90-P100-P112-P132	568780

ACCESSORIES FOR VF & W WORM REDUCTION GEARBOX

TYPE	L.P. in Rs. For SINGLE SHAFT	L.P. in Rs. For DOUBLE SHAFT	L.P. in Rs. For TORQUE ARM	L.P. in Rs. For LONG O.P FLANGE	L.P. in Rs. For SHORT O.P FLANGE	L.P. in Rs. For RB OPTION	L.P. in Rs. For TORQUE LIMITER
VF30	1070	1570	2740	1310	1310	1610	NA
VF44	1120	1800	2740	1980	1980	1850	4960
VF49	1140	2200	3640	2060	2060	2350	5290
W-WR63	1330	2200	7260	2750	2750	3930	10720
W-WR75	1530	2200	8260	3630	3630	5250	12320
W-WR86	1670	2200	9920	3630	3630	5830	16230
W-WR110	1980	3100	11750	7250	7250	9550	21670
VF130	3450	4900	12270	-	-	26740	NA
VF150	5840	59990	12270	-	-	34590	NA
VF185	7800	9750	14220	-	-	57120	NA
VF210	12000	13000	25130	-	-	57120	NA
VF250	13000	14500	27380	-	-	57120	NA

ACCESSORIES FOR VF & W WORM REDUCTION GEARBOX

TYPE		P71	P80	P90	P100/112	P132
W63	BUSH	1600	1600	1600	NA	NA
	INPUT FLANGE	3700	3700	3700	NA	NA
W75	BUSH	1800	1800	1800	1800	NA
	INPUT FLANGE	3700	3700	3700	3700	NA
W86	BUSH	2100	2100	2100	2100	NA
	INPUT FLANGE	5500	5500	5500	5500	NA
W110	BUSH	3950	3950	3950	3950	3950
	INPUT FLANGE	10510	10510	10510	10510	10510



AS Inline Helical Speed Reducer & Gearmotor

SIZE	VERSION	LIST PRICE FOR 'HS'	FRAME SIZE	LIST PRICE FOR 'IEC'
AS 16	P-F	9800	P63-P71	10540
AS 20	P-F	11660	P63-P71-P80-P90	12500
AS 20 D	P-F	13820	P63-P71	14650
AS 25	P-F-R-PR	14770	P71-P80-P90	15860
AS 25 D	P-F-R-PR	17870	P63-P71	18960
AS 30	P-F-R-PR	19900	P71-P80-P90-P100-P112	21310
AS 30 D	P-F-R-PR	22870	P71-P80-P90	24290
AS 35	P-F-R	22120	P71-P80-P90-P100-P112	23700
AS 35 D	P-F-R	26430	P71-P80-P90	28010
AS 45	P-F	35510	P90-P100-P112-P132	37550
AS 45 D	P-F	40910	P71-P80-P90	42950
AS 55	P-F	50250	P100-P112-P132-P160	52980
AS 55 D	P-F	53210	P80-P90-P100-P112-P132	55940
AS 60	P-F	79750	P132-P160-P180	82600
AS 60 D	P-F	84060	P80-P90-P100-P112-P132	86910
AS 80	P-F	115320	P160-P180-P200	118630
AS 80 D	P-F	119430	P100-P112-P132-P160	122730
AS 90	P-F	167930	P180-P200-P225	171460
AS 90 D	P-F	171750	P100-P112-P132-P160-P180	175280
AS100	P-F	287600	P160-P180	293410
AS100	P-F	-	P200-P225	306930
AS100	P-F	-	P250	326470
AS100 D	P-F	321790	P160-P180	327660
AS100 D	P-F	-	P200-P225	341190



TA Shaft Mounted Speed Reducers (SMSR)

Size	WITHOUT ANTI RUN BACK	WITH ANTI RUN BACK	TORQUE ARM
TA30	15630	NA	NA
TA35..35	18170	22310	2710
TA35..35/D	21540	25620	2710
TA40.40	23960	28040	3310
TA40,40/D	29180	33160	3310
TA40.45	23960	28040	3310
TA40.45/D	29180	33160	3310
TA45.45	29760	35070	3440
TA45.45/D	36150	41590	3440
TA45.50	29760	35070	3440
TA45.50/D	36150	41590	3440
TA45.55	29760	35070	3440
TA45.55/D	36150	41590	3440
TA50.50	47830	53590	4200
TA50.50/D	59480	65330	4200
TA50.55	47830	53590	4200
TA50.55/D	59480	65330	4200
TA50.60	47830	53590	4200
TA50.60/D	59480	65330	4200

Size	WITHOUT ANTI RUN BACK	WITH ANTI RUN BACK	TORQUE ARM
TA60.60	68580	75070	4390
TA60.60/D	86530	93500	4390
TA60.70	68580	75070	4390
TA60.70/D	86530	93500	4390
TA70.70	96740	104160	5090
TA70.70/D	118700	126530	5090
TA70.85	96740	104160	5090
TA70.85/D	118700	126530	5090
TA80.80	127040	135090	5160
TA80.80/D	172610	181365	5160
TA80.100	127040	135090	5160
TA80.100/D	172610	181365	5160
TA100.100	212360	227320	9040
TA100.100/D	265570	281390	9040
TA100.125	212360	227320	9040
TA100.125/D	265570	281390	9040
TA125.125	286065	302770	9610
TA125.125/D	342460	358500	9610
TA125.135	286065	32770	9610
TA125.135/D	342460	358500	9610



A Helical Bevel Gearmotor

SIZE	VERSION	LIST PRICE FOR 'HS'	FRAME SIZE	LIST PRICE FOR 'IEC'	ADDITIONAL ACCESSORIES OUTPUT FLANGE KIT		
					F1A	F1B	F1C
A052	UH-UR-UD-NUH	NA	P63-P71-P80	28000	2070	2070	
A102	UH-UR-UD-NUH	33950	P63-P71-P80-P90-P100-P112	33950	2300	2980	3110
A202	UH-UR-UD-NUH	38590	P63-P71-P80-P90-P100-P112	38590	2980	2980	5270
A203	UH-UR-UD-NUH	45450	P63-P71-P80-P90-P100-P112	45450			
A302	UH-UR-UD-NUH	50090	P63-P71-P80-P90-P100-P112	50090	2980	2980	5270
A303	UH-UR-UD-NUH	57260	P63-P71-P80-P90-P100-P112	57260			
A352	UH-UR-UD-NUH	59240	P63-P71-P80-P90-P100-P112	59240	5270	6580	NA
A352	UH-UR-UD-NUH	95240	P132	63840			NA
A353	UH-UR-UD-NUH	62940	P63-P71-P80-P90-P100-P112	62940			NA
A412	UH-UR-UD-NUH	76060	P63-P71-P80-P90-P100-P112	76060	9280	11710	15130
A412	UH-UR-UD-NUH	76060	P132	82100			
A413	UH-UR-UD-NUH	82190	P63-P71-P80-P90-P100-P112	82190			
A502	UH-UR-UD-NUH	101860	P63-P71-P80-P90-P100-P112	101860	9280	11710	15130
A502	UH-UR-UD-NUH	101860	P132	107240			
A502	UH-UR-UD-NUH	101860	P160-P180	118770			
A503	UH-UR-UD-NUH	108180	P63-P71-P80-P90-P100-P112	108180			
A503	UH-UR-UD-NUH	108180	P132	113570			
A503	UH-UR-UD-NUH	108180	P160-P180	125100			
A504	UH-UR-UD-NUH	113340	P63-P71-P80-P90-P100-P112	113340			
A552	UH-UR-UD-NUH	113460	P80-P90-P100-P112	113460	9800	12380	15990
A552	UH-UR-UD-NUH	113460	P132	118960			
A552	UH-UR-UD-NUH	113460	P160-P180	130790			
A553	UH-UR-UD-NUH	126730	P63-P71-P80-P90-P100-P112	126730			
A553	UH-UR-UD-NUH	126730	P132	132230			
A553	UH-UR-UD-NUH	126730	P160-P180	144060			
A554	UH-UR-UD-NUH	139060	P63-P71-P80-P90-P100-P112	139060			
A602	UH-UR-UD-NUH	126170	P80-P90-P100-P112	126170	9280	11710	15130
A602	UH-UR-UD-NUH	126170	P132	131650			
A602	UH-UR-UD-NUH	126170	P160-P180	144210			
A603	UH-UR-UD-NUH	149510	P63-P71-P80-P90-P100-P112	149510			
A603	UH-UR-UD-NUH	149510	P132	154990			
A603	UH-UR-UD-NUH	149510	P160-P180	167540			
A604	UH-UR-UD-NUH	157990	P63-P71-P80-P90-P100-P112	157990			
A703	UH-UR-UD-NUH	236420	P80-P90-P100-P112	236420	19300	24500	NA
A703	UH-UR-UD-NUH	236420	P132	241660			
A703	UH-UR-UD-NUH	236420	P160-P180	253280			
A703	UH-UR-UD-NUH	236420	P200-P225	260780			
A704	UH-UR-UD-NUH	245130	P63-P71-P80-P90-P100-P112	245130			
A704	UH-UR-UD-NUH	245130	P132	251410			
A803	UH-UR-UD-NUH	358090	P80-P90-P100-P112	358090	24500	29380	NA
A803	UH-UR-UD-NUH	358090	P132	363760			
A803	UH-UR-UD-NUH	358090	P160-P180	368910			
A803	UH-UR-UD-NUH	358090	P200-P225	379030			
A804	UH-UR-UD-NUH	371680	P63-P71-P80-P90-P100-P112	371680			
A804	UH-UR-UD-NUH	371680	P132	378660			
A903	UH-UR-UD-NUH	487070	P80-P90-P100-P112	487070	35280	NA	NA
A903	UH-UR-UD-NUH	487070	P132	493590			
A903	UH-UR-UD-NUH	487070	P160-P180	499860			
A903	UH-UR-UD-NUH	487070	P200-P225	511250			
A903	UH-UR-UD-NUH	487070	P250	527130			
A904	UH-UR-UD-NUH	516120	P63-P71-P80-P90-P100-P112	516120			
A904	UH-UR-UD-NUH	516120	P132	523150			
A904	UH-UR-UD-NUH	516120	P160-P180	529430			

N.B.: An anti-run back device is available on request. Any non-standard feature other than above kindly contact our sales team.



F Series Shaft Mounted Gearbox & Gearmotors

SIZE	VERSION	LIST PRICE FOR 'HS" (SOLID INPUT SHAFT)	INPUT MOTOR MTG.FLANGE OPTION	LIST PRICE FOR IEC (INPUT MOTOR MTG.FLANGE)	OUTPUT FLANGES OPTION		
					FA	FB	FC
F102	H	30200	P63-P71-P80-P90-P100-P112	30200	2340	3030	3170
F202	H	35070	P63-P71-P80-P90-P100-P112	35070	2940	4780	5380
F203	H	41420	P63-P71-P80-P90-P100-P112	41420			
F252	H	39260	P63-P71-P80-P90-P100-P112	39260	2850	5380	NA
F253	H	43580	P63-P71-P80-P90-P100-P112	43580			
F254	H	48360	P63-P71-P80-P90-P100-P112	48360			
F312	H	44730	P63-P71-P80-P90-P100-P112	44730	5380	6710	NA
F313	H	48400	P63-P71-P80-P90-P100-P112	48400			
F314	H	54330	P63-P71-P80-P90-P100-P112	54330			
F412	H	63480	P63-P71-P80-P90-P100-P112	63480	5380	6710	9190
F412	H	63480	P132	67990			
F413	H	68630	P63-P71-P80-P90-P100-P112	68630			
F413	H	68630	P132	73140			
F414	H	72680	P63-P71-P80-P90-P100-P112	72680			
F512	H	95440	P80-P90-P100-P112	95440	9630	12160	15700
F512	H	95440	P132	100060			
F512	H	95440	P160-P180	110320			
F513	H	102830	P63-P71-P80-P90-P100-P112	102830			
F513	H	102830	P132	107450			
F513	H	102830	P160-P180	117710			
F514	H	109780	P63-P71-P80-P90-P100-P112	109780			
F603	H	136930	P63-P71-P80-P90-P100-P112	136930	8750	11050	14280
F603	H	136930	P132	144580			
F603	H	136930	P160-P180	153240			
F604	H	147500	P63-P71-P80-P90-P100-P112	147500			
F703	H	187320	P80-P90-P100-P112	187320	18210	23120	NA
F703	H	187320	P132	192000			
F703	H	187320	P160-P180	202260			
F703	H	187320	P200-P225	208800			
F704	H	194970	P63-P71-P80-P90-P100-P112	194970			
F704	H	194970	P132	200540			
F803	H	NA	P80-P90-P100-P112	266390	23120	27710	NA
F803	H	NA	P132	271480			
F803	H	NA	P160-P180	275890			
F803	H	NA	P200-P225	284870			
F804	H	278330	P63-P71-P80-P90-P100-P112	278330			
F804	H	278330	P132	284470			
F903	H	386930	P80-P90-P100-P112	386930	33280	NA	NA
F903	H	386930	P132	392580			
F903	H	386930	P160-P180	398070			
F903	H	386930	P200-P225	408140			
F903	H	386930	P250	422200			
F904	H	412520	P63-P71-P80-P90-P100-P112	412520			
F904	H	412520	P132	418660			
F904	H	412520	P160-P180	424280			

N.B.: All prices of F series gearboxes listed in this price list refer to H version. For prices of the R, S, HF, RF, SF, FL versions please call our Sales team.



BN & BE Series AC Electric Motors

BN & BE Series 2 Pole 3000 RPM B5, B14 Mounting Electric Motor, Degree of Protection IP55, Insulation Class 'F', Ambient Temperature 50° C, Method of cooling IC411, 230D/400Y V ±10% 50Hz - 460Y ±10% 60Hz

	Type Reference	HP	KW	Frame Size	List Price	Brake Motors With Release Lever (FDR)IP 54
IE2 Efficiency	BE63A2	0.25	0.18	63	9010	NA
	BE63B2	0.33	0.25	63	9930	23140
	BE63C2	0.5	0.37	63	10540	NA
	BE71A2	0.5	0.37	71	10540	NA
	BE71B2	0.75	0.55	71	13670	NA
	BE71C2	1.00	0.75	71	13730	NA
	BE80A2	1.00	0.75	80	13730	NA
	BE80B2	1.50	1.1	80	15270	NA
	BE80C2	2.00	1.5	80	NA	NA
	BE90SA2	2.00	1.5	90	18230	NA
	BE90L2	3.00	2.2	90	22400	44320
	BE100L2	4.00	3.00	100	31600	61580
	BE100LB2	5.50	4.00	100	31600	NA
	BE112M2	5.50	4.00	112	NA	NA
	BE132SA2	7.50	5.5	132	44100	NA
BE132SB2	10.00	7.5	132	NA	NA	

*NOTE:- Please contact our sales office for any non standard featured Motors.



BN & BE Series AC Electric Motors

BN & BE Series 4 Pole 1500 RPM B5, B14 Mounting Electric Motor, Degree of Protection IP55, Insulation Class 'F', Ambient Temperature 50° C, Method of cooling IC411, 230D/400Y V ±10% 50Hz - 460Y ±10% 60Hz

	Type Reference	HP	KW	Frame Size	List Price	Brake Motors With Release Lever (FDR) IP 54
IE1 Efficiency	BN27A4	0.06	0.04	27	7310	NA
	BN27B4	0.08	0.06	27	7870	NA
	BN27C4	0.12	0.09	27	8150	NA
	BN44B4	0.08	0.06	44	7890	NA
	BN44C4	0.12	0.09	44	8210	NA
	BN56A4	0.08	0.06	56	7950	NA
	BN56B4	0.12	0.08	56	8230	NA
IE2 Efficiency	BE63A4	0.16	0.12	63	9060	24860
	BE63B4	0.25	0.18	63	9560	25350
	BE63C4	0.33	0.25	63	10680	25810
	BE71A4	0.33	0.25	71	10680	25810
	BE71B4	0.50	0.37	71	11060	26550
	BE71C4	0.75	0.55	71	13870	33180
	BE80A4	0.75	0.55	80	13870	33180
	BE80B4	1.00	0.75	80	14480	34250
	BE80C4	1.50	1.10	80	17180	40700
	BE90S4	1.50	1.10	90S	17180	40700
	BE90LA4	2.00	1.50	90L	19940	42190
	BE90LB4	2.50	1.85	90L	24200	50450
	BE100LA4	3.00	2.20	100L	24200	50450
	BE100LB4	4.00	3.00	100L	32040	61850
	BE112M4	5.50	4.00	112M	32040	61850
	BE132S4	7.50	5.50	132S	44230	89950
	BE132MA4	10.00	7.50	132M	53340	95400
BE132MB4	12.50	9.00	132MB	72730	113490	

*NOTE:- Please contact our sales office for any non standard featured Motors.



BN & BE Series AC Electric Motors

BN & BE Series 6 Pole 1000 RPM B5, B14 Mounting Electric Motor, Degree of Protection IP55, Insulation Class 'F', Ambient Temperature 50° C, Method of cooling IC411, 230D/400Y V ±10% 50Hz - 460Y ±10% 60Hz

	Type Reference	HP	KW	Frame Size	LIST PRICE	Brake Motors With Release Lever (FDR)IP 54
IE1 eff.	BN63A6	0.12	0.09	63	NA	NA
IE2 Efficiency	BE63B6	0.16	0.12	63	13820	26920
	BE71A6	0.25	0.18	71	15120	27470
	BE71B6	0.33	0.25	71	15310	28230
	BE71C6	0.5	0.37	71	15360	NA
	BE80A6	0.5	0.37	80	15360	NA
	BE80B6	0.75	0.55	80	15760	34060
	BE80C6	1	0.75	80	18210	NA
	BE90S6	1	0.75	90	18210	39120
	BE90L6	1.5	1.10	90	22870	45770
	BE100LA6	2	1.50	100	27220	NA
	BE100LB6	2.5	1.85	100	31230	NA
	BE112M6	3	2.20	112	31230	NA
	BE132MA6	5.5	4.00	132	50350	NA

***NOTE:- Please contact our sales office for any non standard featured Motors.**



Excellence Every Time

One-stop Integrated Products and Solutions Provider for all Industrial and Commercial sourcing needs.



Excellence Every Time



Customer Extended Warehouse

20+ Fulfillment Centers PAN India.



Inventory

1 Lakh SKUs Wide Range Of Products to Select to Satisfy Your Requirements.



Solution Support

Customer Rely On Segment Technical Experts to Provide Solutions & Support.



Knowledge Bank

42+ Years Of Business Expertise In System & Processes for Seamless Service.



Green Energy

Smart Energy Solutions for Sustainable Development.



Customer Delight

30,000+ Delighted Believers Pan India Customers Appreciate Our Timely Response to Enhance their Productivity.



Delivery at Your Location

Free Delivery at Your Doorsteps.



Repair & Service Support.

Value Realization of every Component by Providing Consumable Spares, Repairs and Warranty Support.



Customer Connect Service & Support

Toll Free No.

1800-2661658

Whatsapp

+91 8097433790

E-Mail

sales@vashiisl.com

E-commerce

vashiisl.com

Serve Portal
Enterprise Account
 VALUE ADDED SERVICES
vserve.vashiisl.com

Sales Offices & Fulfillment Centers

- BHIWANDI**
02522-661600
- TURBHE**
022-27626300
- BOISAR**
7506665443
- PUNE**
020-63106300
- NAGPUR**
07104-235393
- AURANGABAD**
0240-2984227
- GOA**
7045699512
- AHMEDABAD**
079-29703795
- VADODARA**
079-29703795
- VAPI**
9979955121
- HYDERABAD**
040-23097734/5
- BANGALORE**
080-26746116
- INDORE**
90092 88444
- CHENNAI**
044-24760381
- GURUGRAM**
0124-4989570
- NOIDA**
0120-4030500
- KOLKATA**
033-66301111
- COIMBATORE**
0422-2333342
- CHANDIGARH**
01762-525680



Head Office: A-6, Plot No.74, Shree Ganesh Complex Behind Gupta Compound, Mankoli Naka, Bhiwandi, M.H 421305

Distributor | Channel Partner For Industrial And Commercial Products

 Switchgears	 Switchgears & Wiring Devices	 Switchgears	 Drives & Automation	 Industrial Automation	 Geared Motors
 Motors	 Motors	 Motors	 Motors	 Servo & Compact AC Geared Motors	 Wires & Cables
 Wires & Cables	 Wires & Cables	 Lighting	 Lighting	 Digital Panel Meters	 Terminal Blocks & Relay Cards
 Bearings	 Industrial Lubricants	 Pneumatics	 V-Belts	 Disinfectants & Sanitizers	

INDIA'S LEADING DISTRIBUTOR FOR SOLAR ENERGY PRODUCTS

Solar Products Basket

 Imported Panels	 Indian Panels	 String Inverters	 String Inverters	 ACDB & DCDB
 Solar Module Mounting Structure	 AC / AC Solar Cable	 AC Combiner Panel	 Solar PV Connectors	
<p>(BOS) Balance of System</p>				